

# Assessing the large-scale spatial representativeness of soil moisture over the United States

Nadine Nicolai-Shaw, Martin Hirschi, Heidi Mittelbach, and Sonia I. Seneviratne  
contact: [nadine.nicolai@env.ethz.ch](mailto:nadine.nicolai@env.ethz.ch)



Soil moisture is crucial for environmental science

Insight into the spatial variability of soil moisture can provide a basis for up-scaling in-situ soil moisture station data, network improvement and climate model validation

Several studies on the spatial-temporal variability of soil moisture

Research question:

*What is the spatial representativeness of temporal soil moisture dynamics, i.e the spatial footprint?*

# Data and Method

## Soil moisture data sets:

- **In-situ** measurements
  - International Soil Moisture Network (ISMN)
  - North American Soil Moisture Database (NASMD)
- **Satellite derived**
  - ESA Climate Change Initiative soil moisture project (ECV-SM, 1979-2010)
- **Land-surface model estimates**
  - ERA Interim/Land (ERA, 1979-2010)

## Location:

- North America

## Period investigated:

- April-September 2003-2010

## Temporal resolution:

- Daily absolute values
- Daily inter-annual anomalies

## Soil moisture data sets:

- **In-situ** measurements
  - International Soil Moisture Network (ISMN)
  - North American Soil Moisture Database (NASMD)
- **Satellite derived**
  - ESA Climate Change Initiative soil moisture project (ECV-SM, 1979-2010)
- **Land-surface model estimates**
  - ERA Interim/Land (ERA, 1979-2010)

## Location:

- North America

## Period investigated:

- April-September 2003-2010

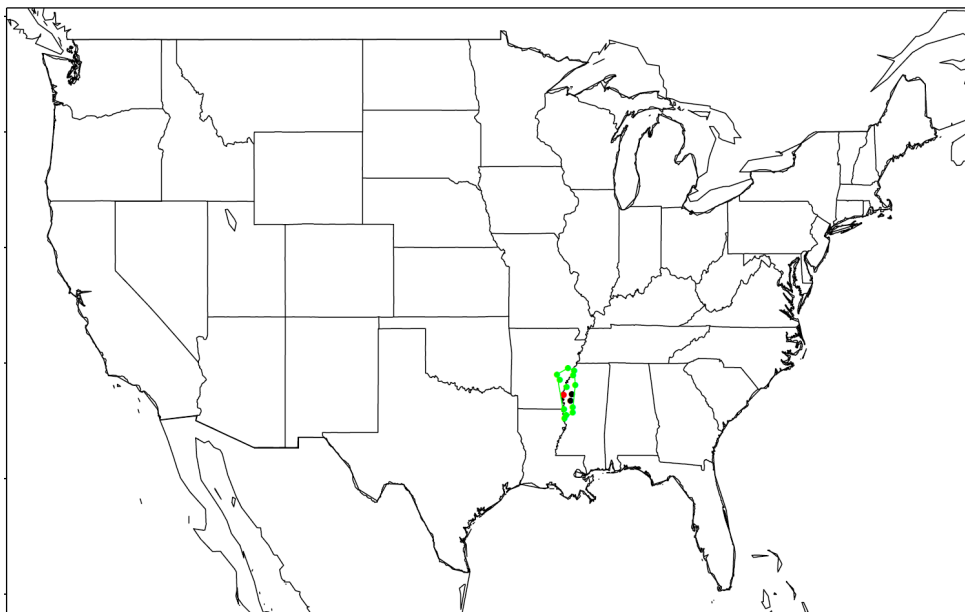
## Temporal resolution:

- Daily absolute values
- Daily inter-annual anomalies



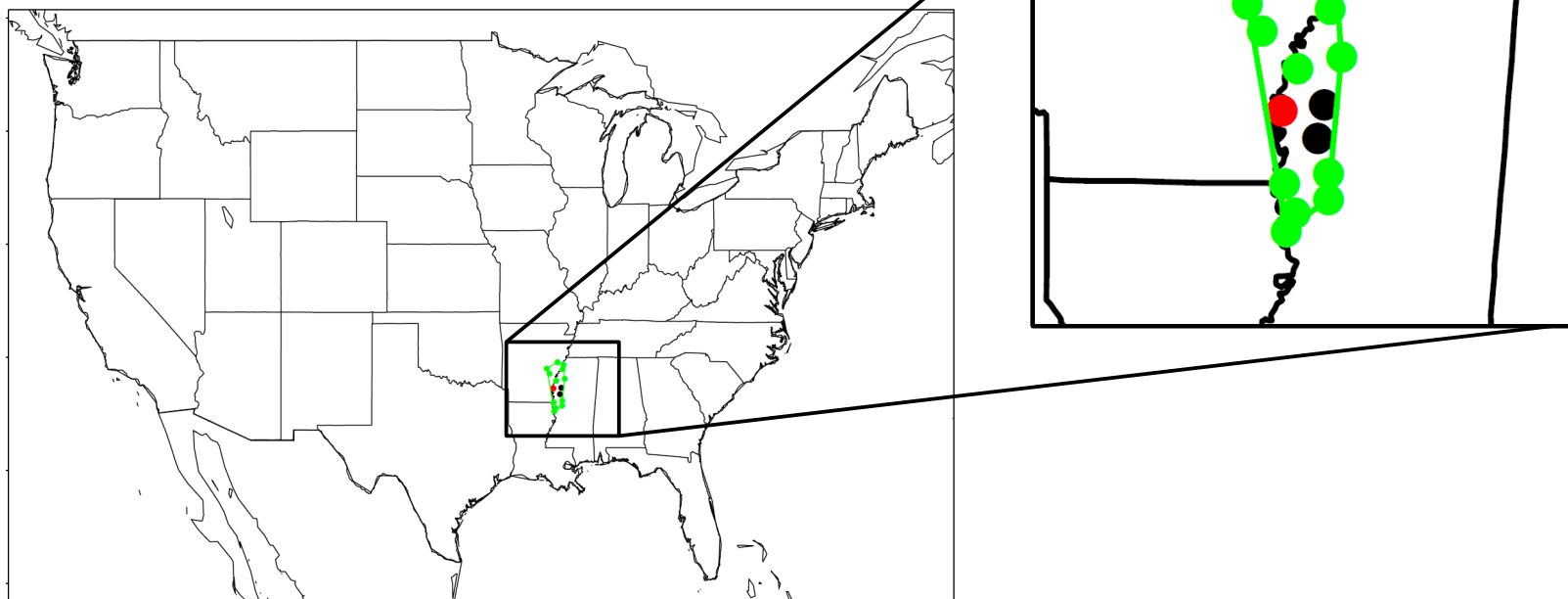
## Spatial representativeness:

- Area surrounding a station in which other stations exhibit similarity above a predefined cut-off  
→ definition of convex hull area = footprint of station
- Similarity is based on rank correlation
- Method also applied to gridded data



## Spatial representativeness:

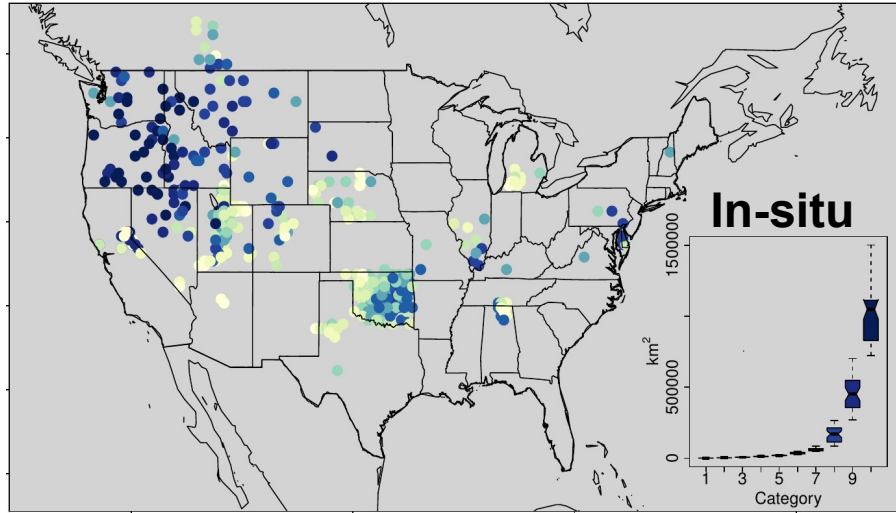
- Area surrounding a station in which other stations exhibit similarity above a predefined cut-off  
 → definition of convex hull area = footprint of station
- Similarity is based on rank correlation
- Method also applied to gridded data

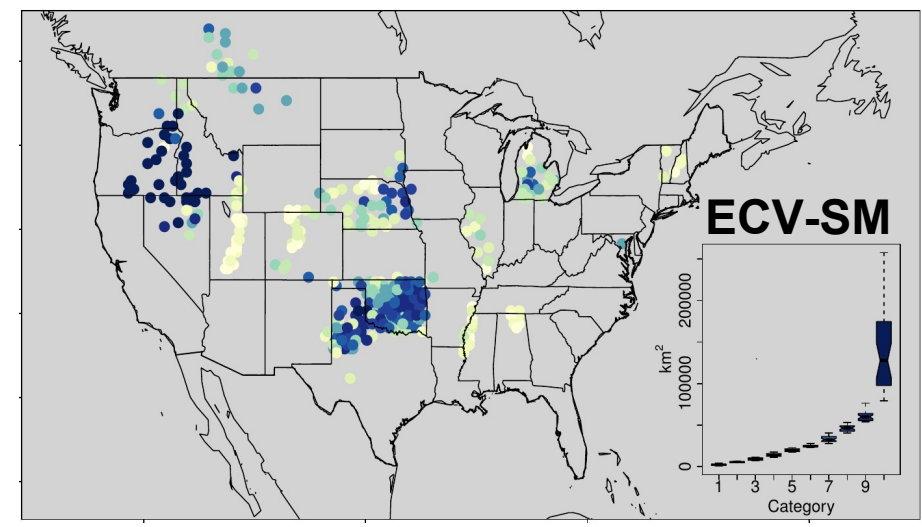
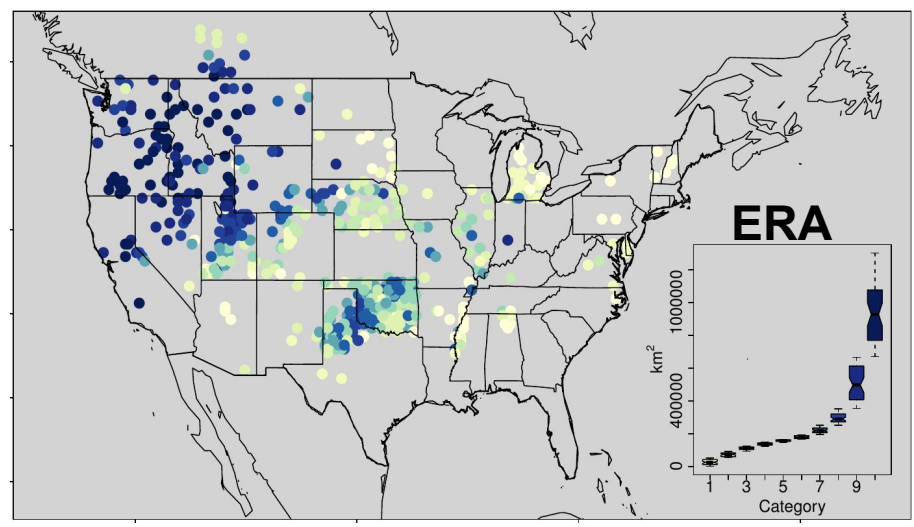
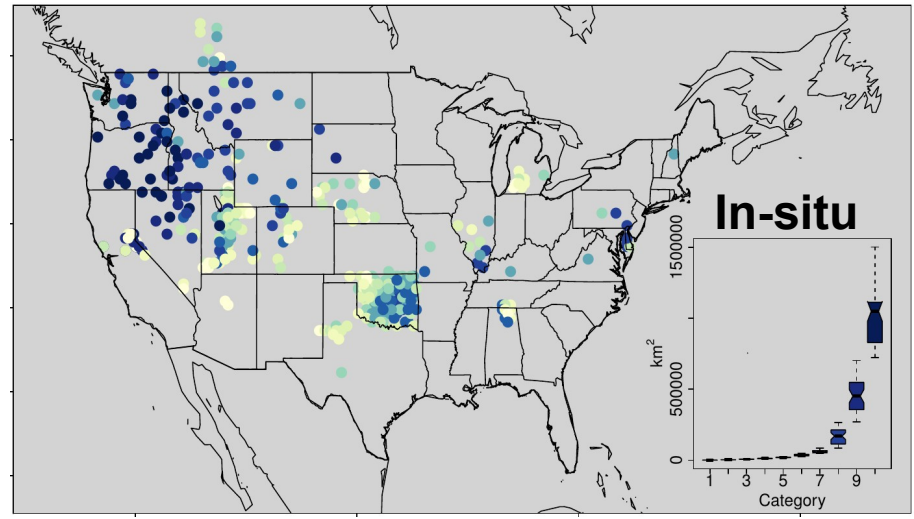




# Results



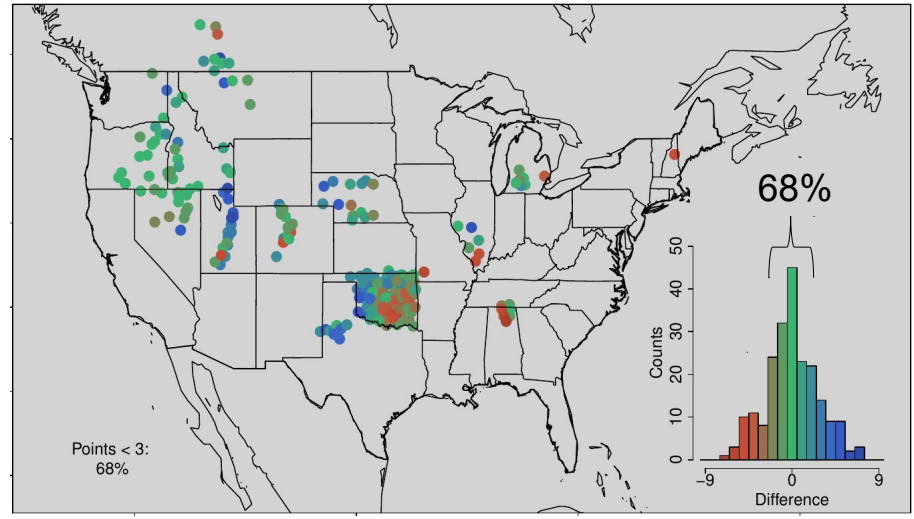
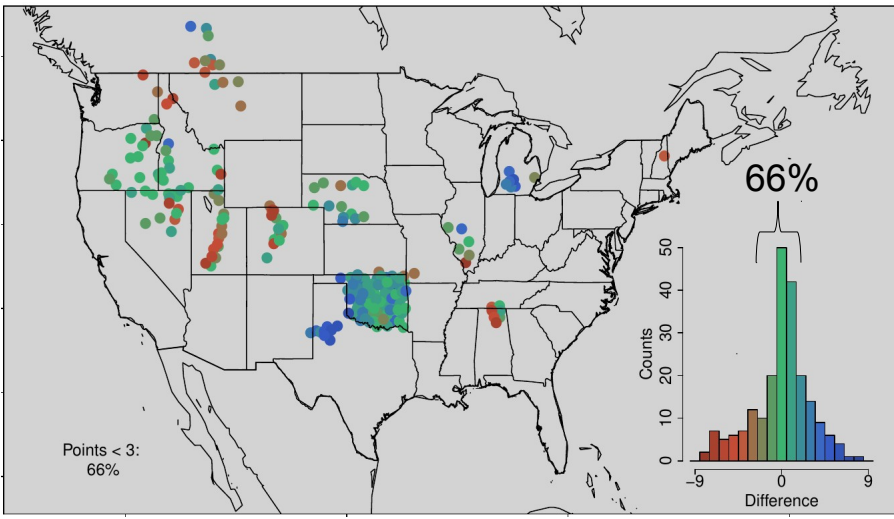




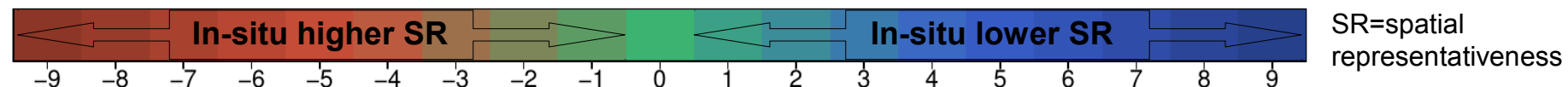
## ECV-SM - In-situ

## ERA - In-situ

Absolute Values



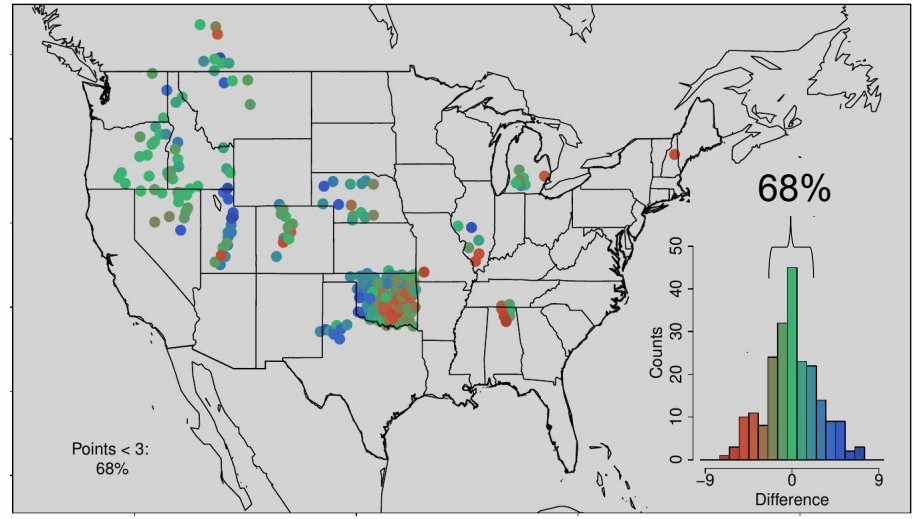
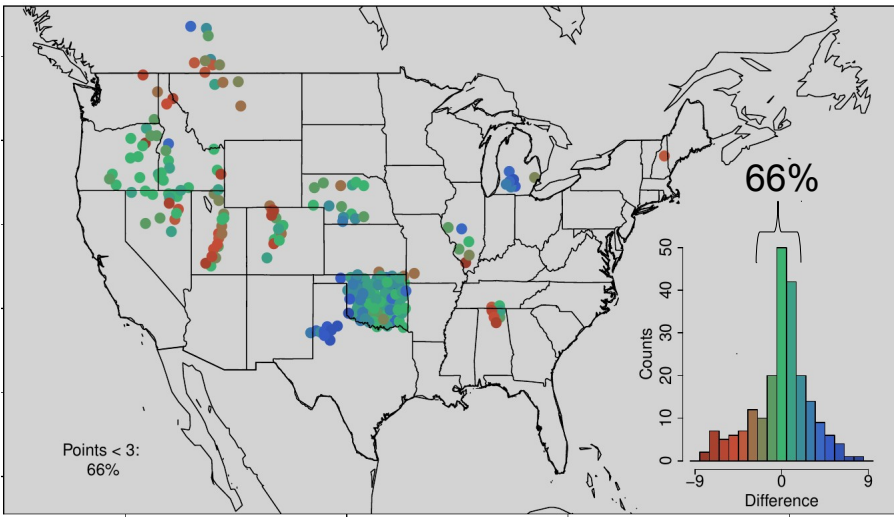
Inter-annual Anomalies



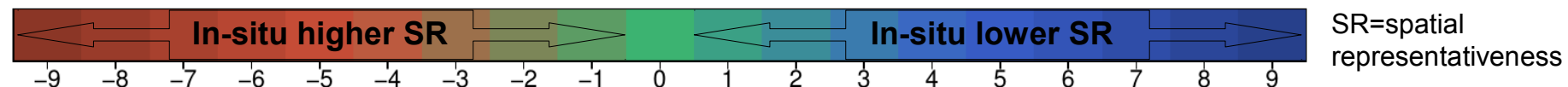
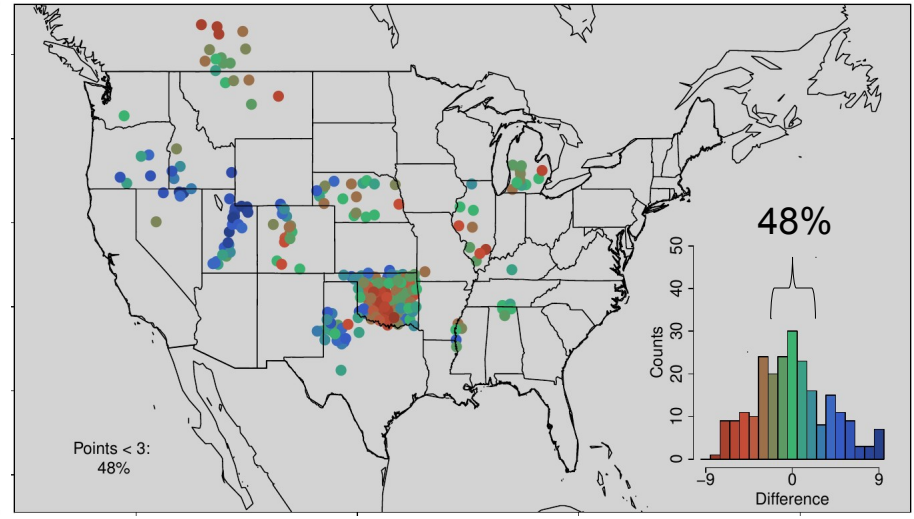
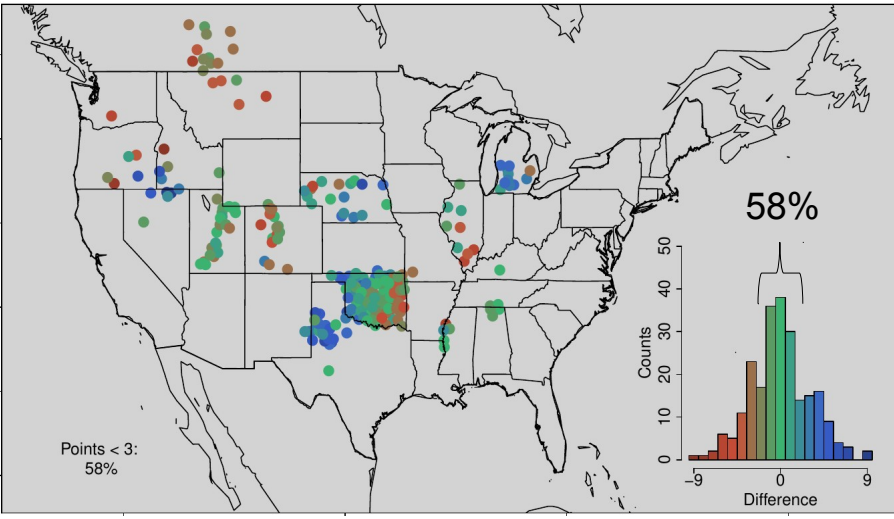
## ECV-SM - In-situ

## ERA - In-situ

Absolute Values



Inter-annual Anomalies

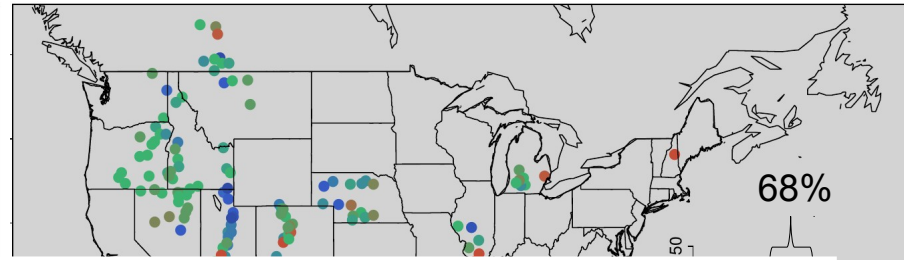
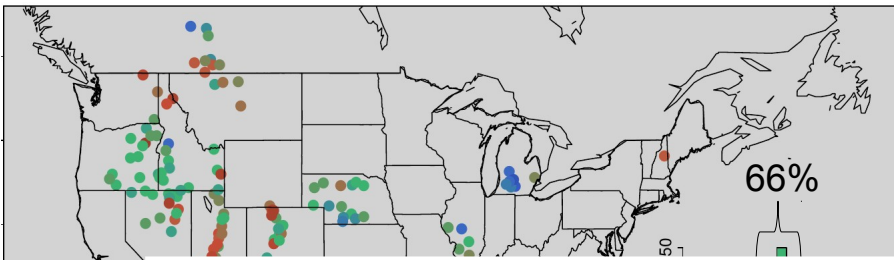




## ECV-SM - In-situ

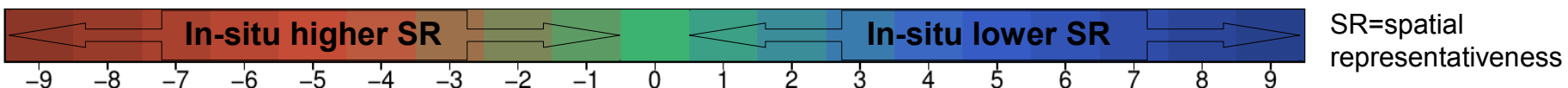
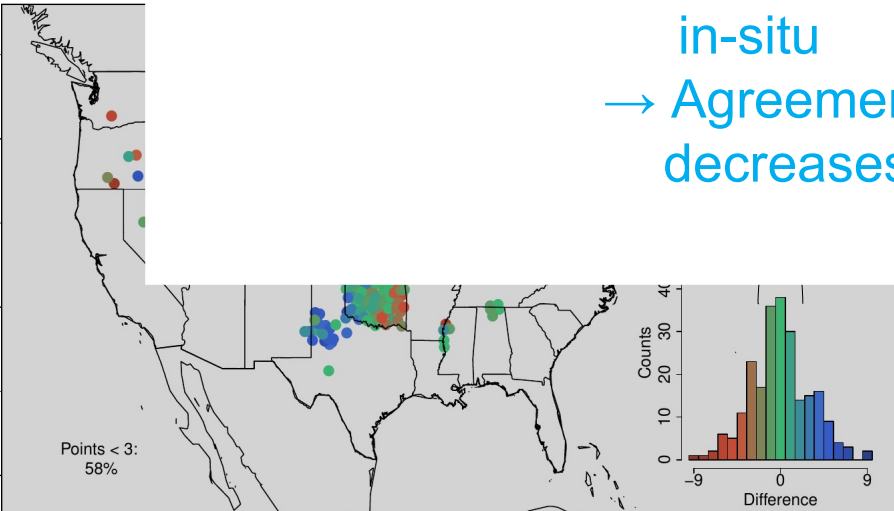
## ERA - In-situ

Absolute Values



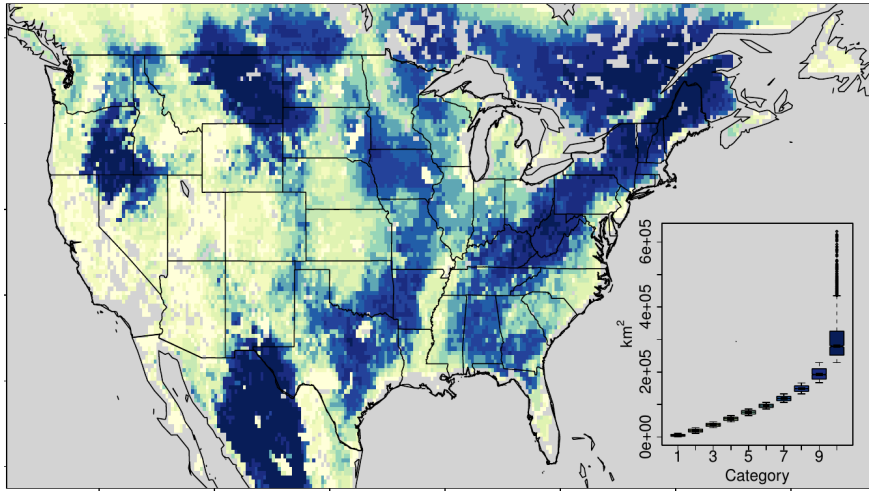
- Absolute values → Similar agreement with in-situ for both products
- Anomalies → ECV-SM shows higher agreement with in-situ
- Agreement with the in-situ measurements decreases for both products

Inter-annual Anomalies

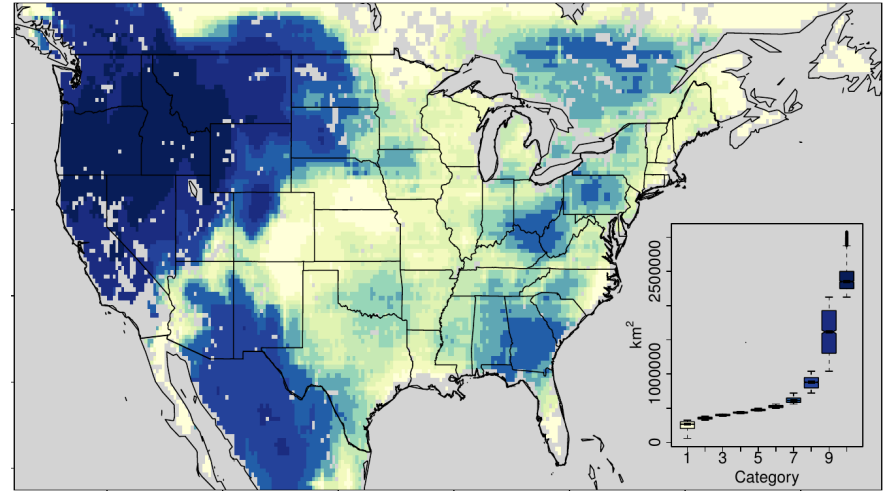


Absolute Values

### ECV-SM



### ERA



LOW



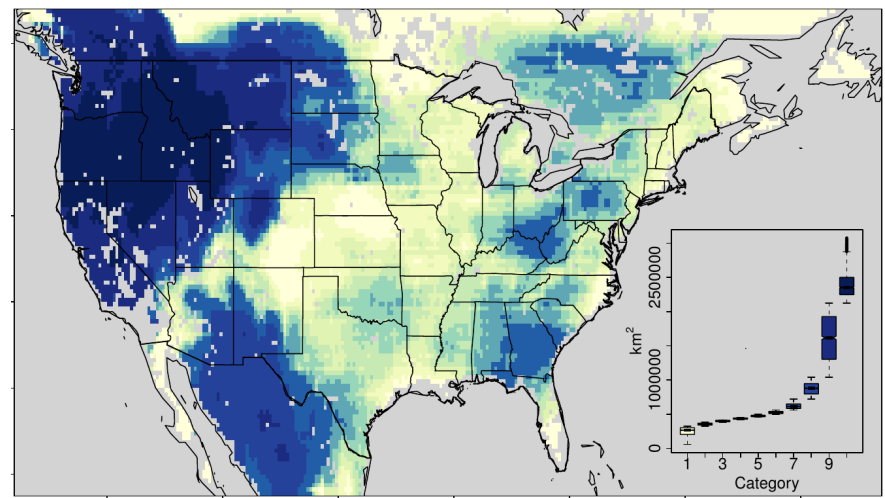
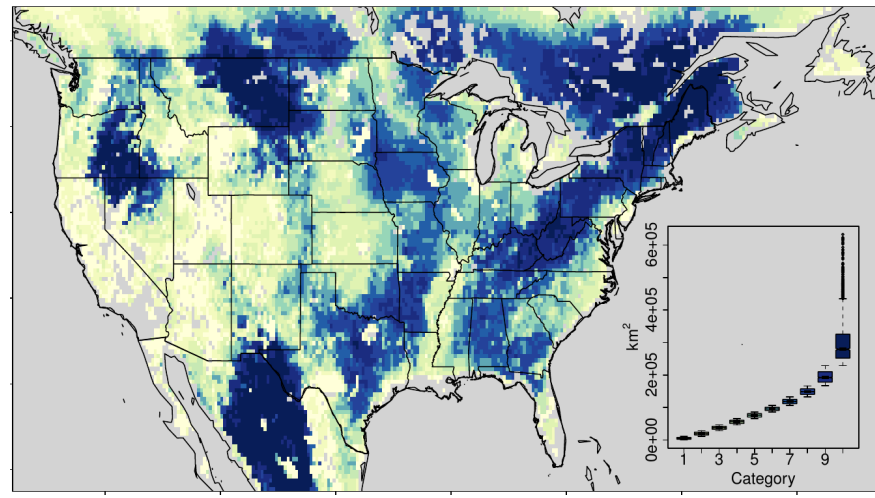
HIGH



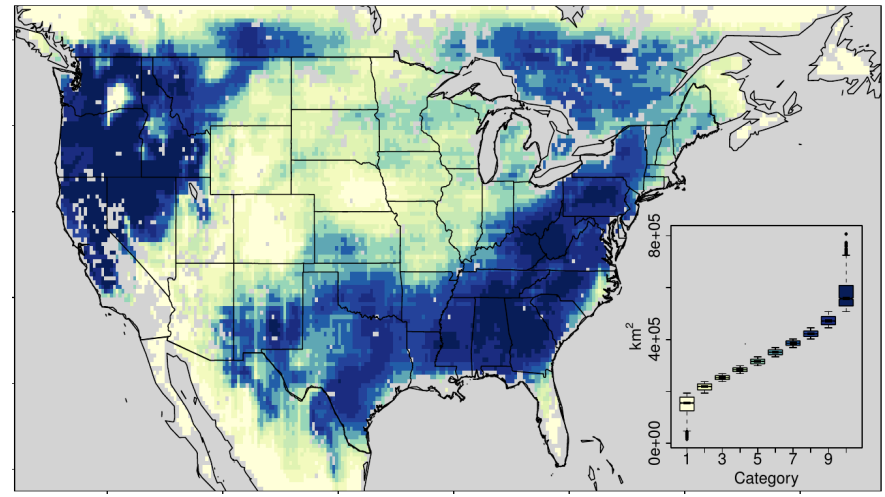
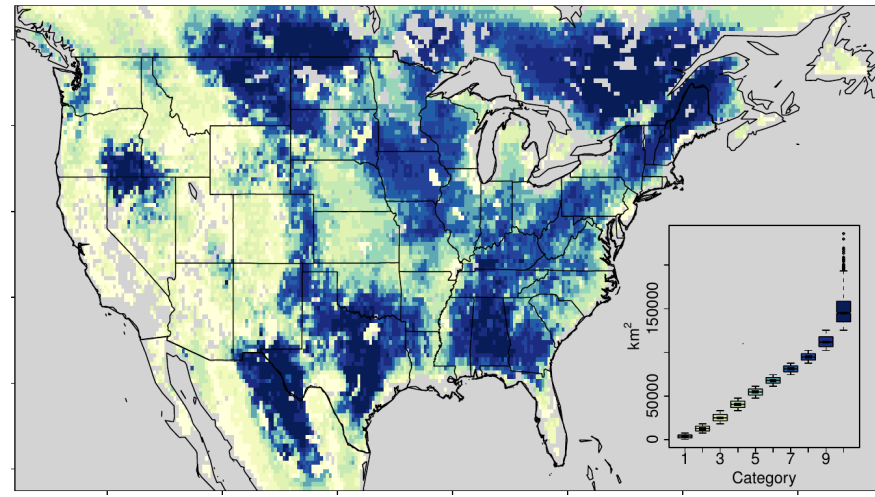
Absolute Values

**ECV-SM**

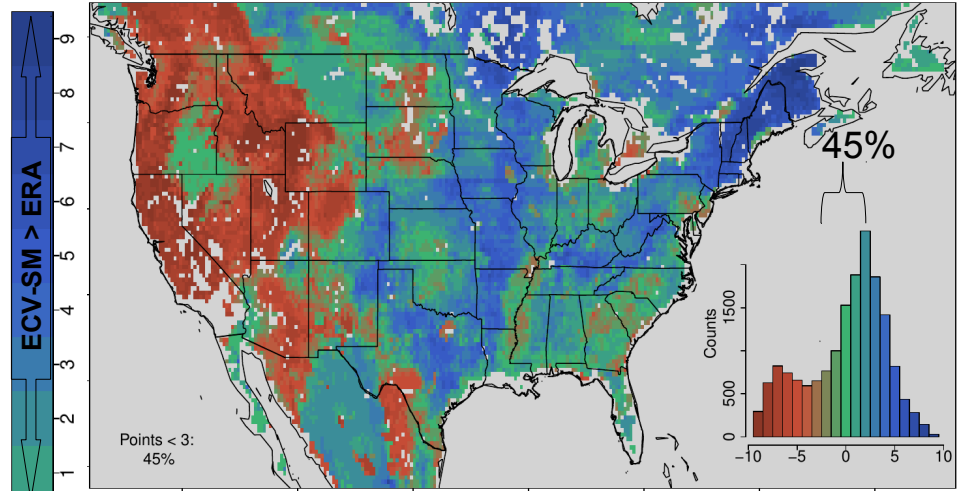
**ERA**



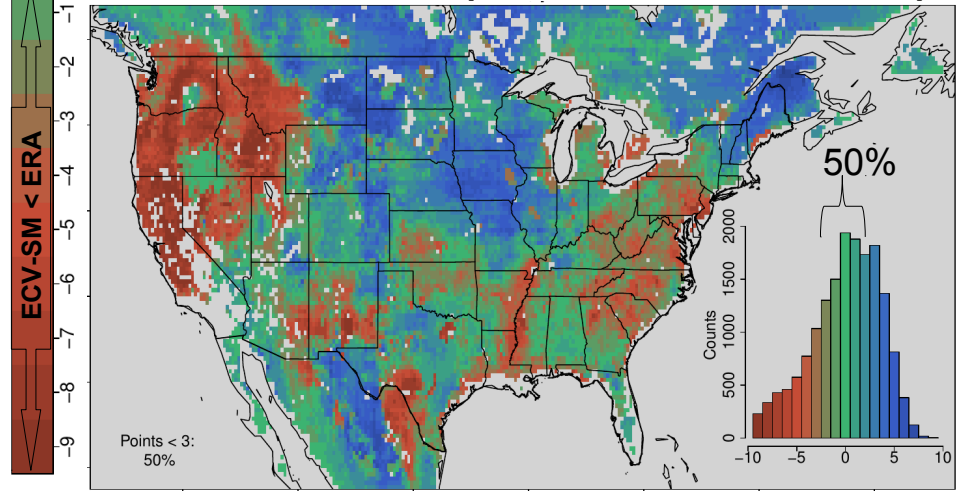
Inter-annual Anomalies



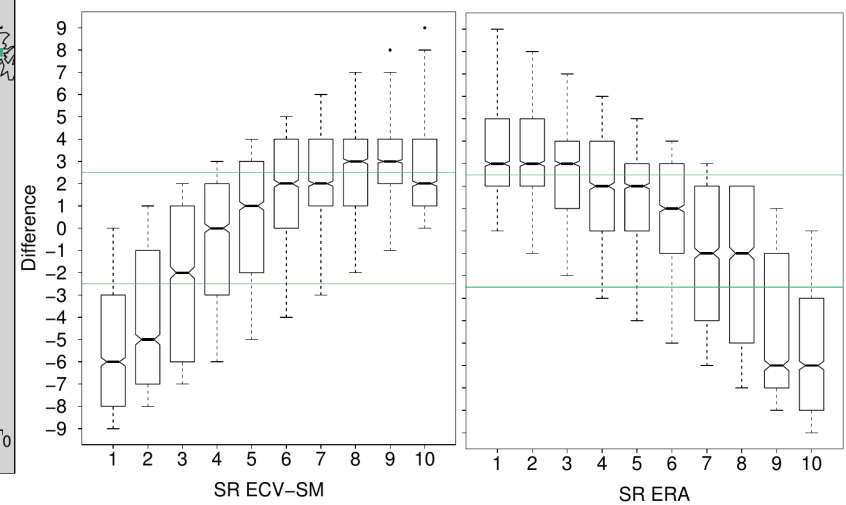
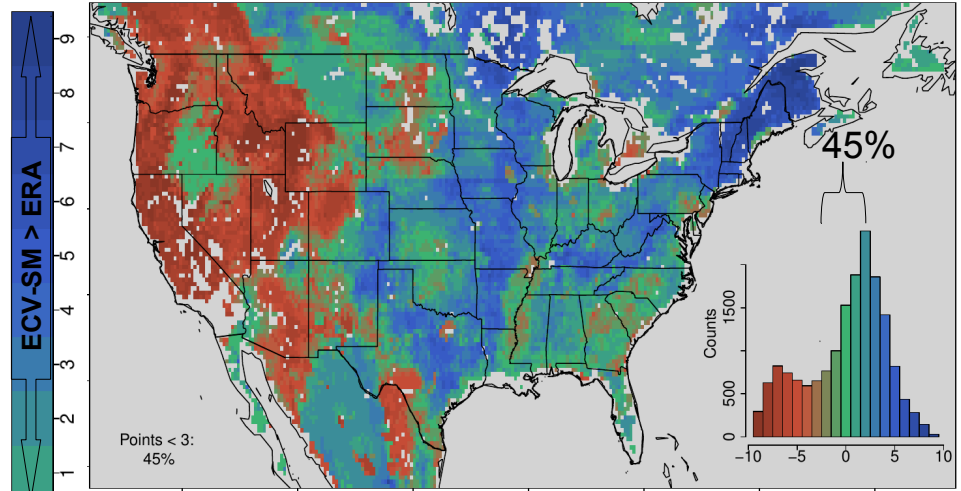
## ECV-SM - ERA (Absolute)



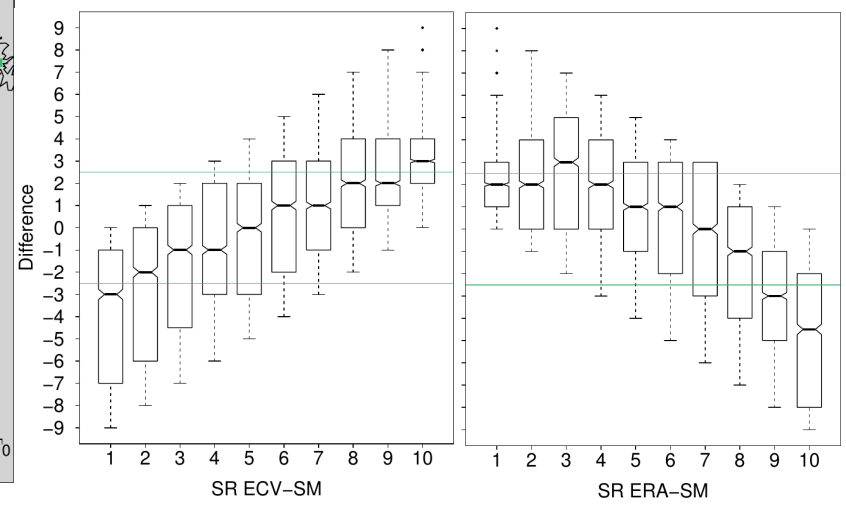
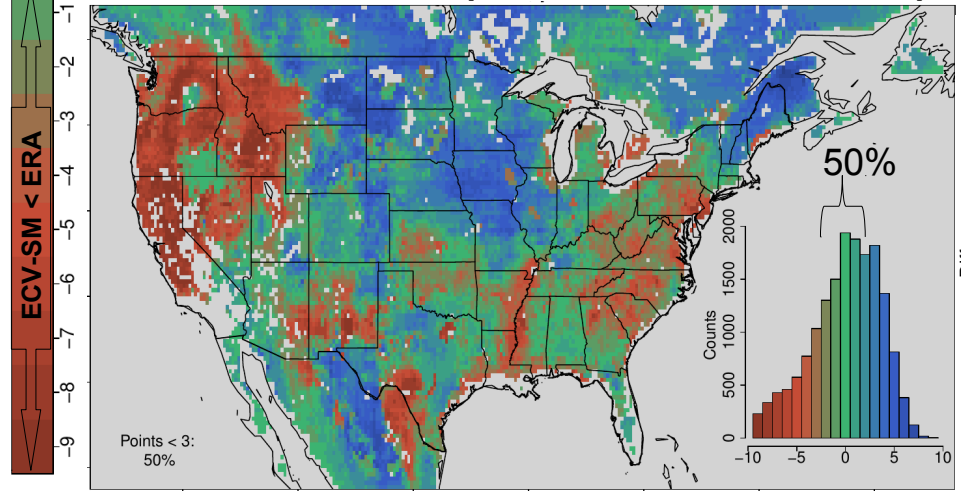
## ECV-SM - ERA (Inter Annual Anom.)



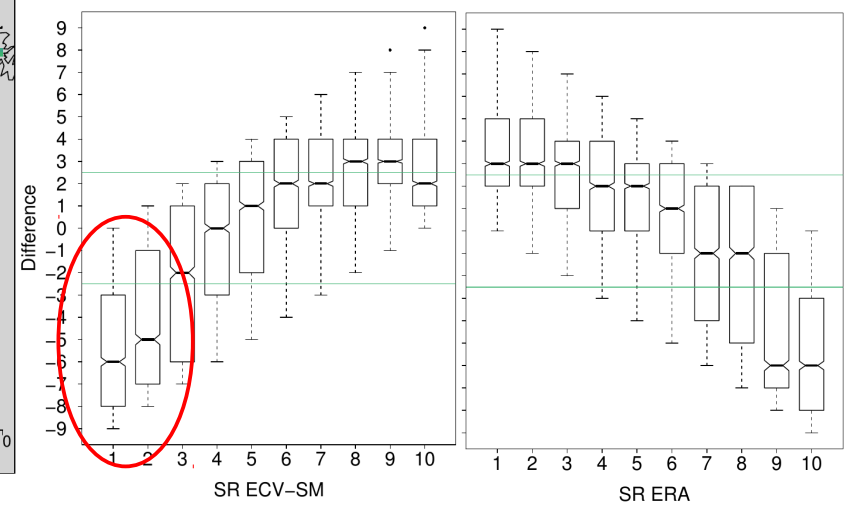
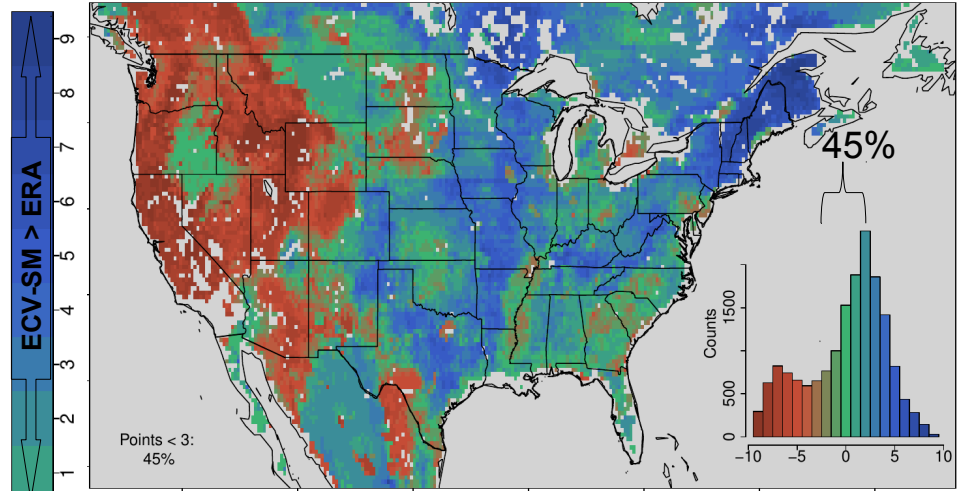
## ECV-SM - ERA (Absolute)



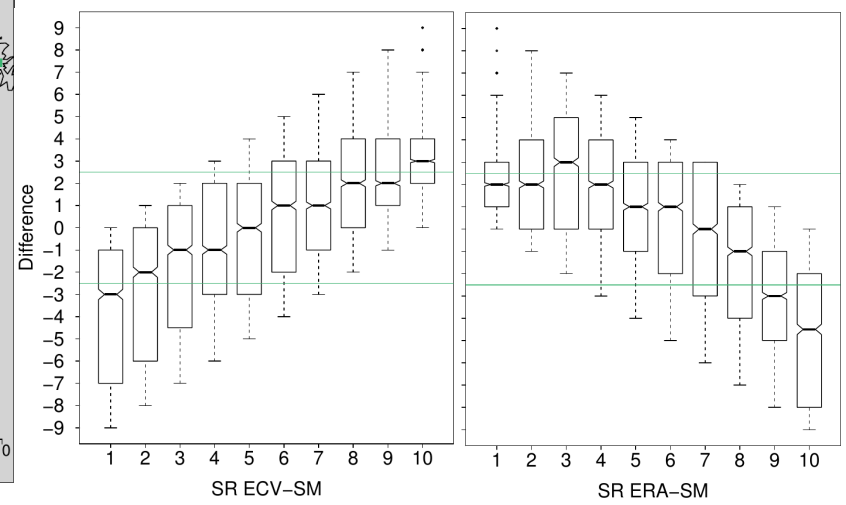
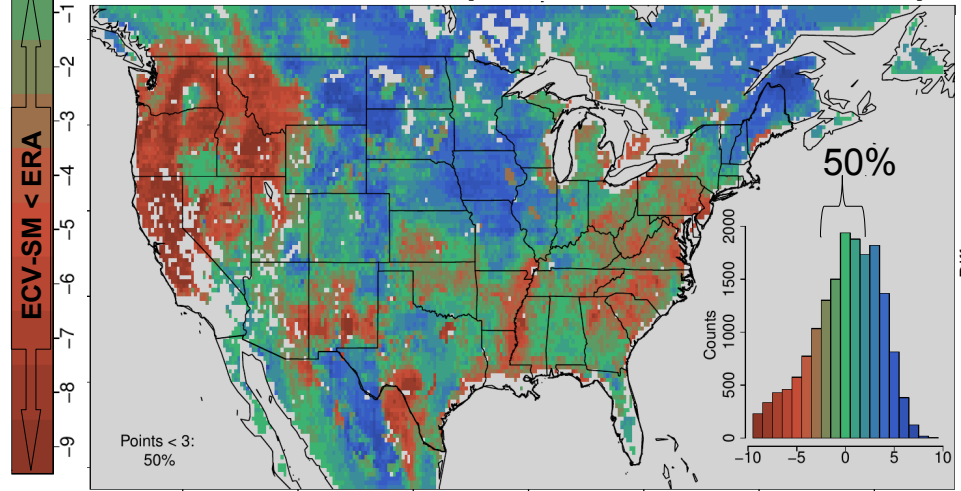
## ECV-SM - ERA (Inter Annual Anom.)



## ECV-SM - ERA (Absolute)

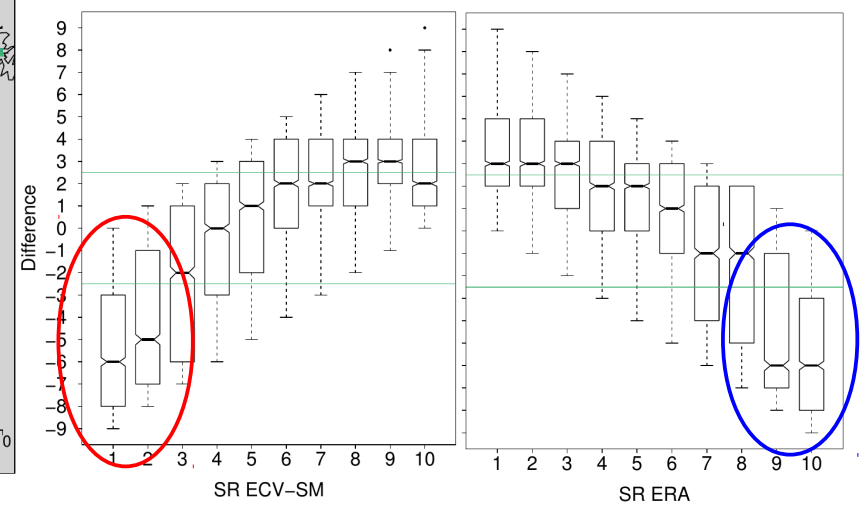
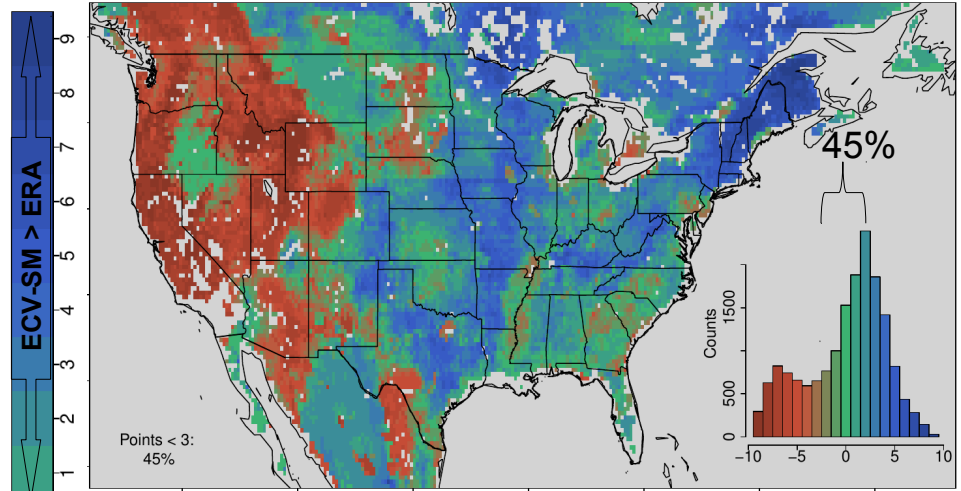


## ECV-SM - ERA (Inter Annual Anom.)

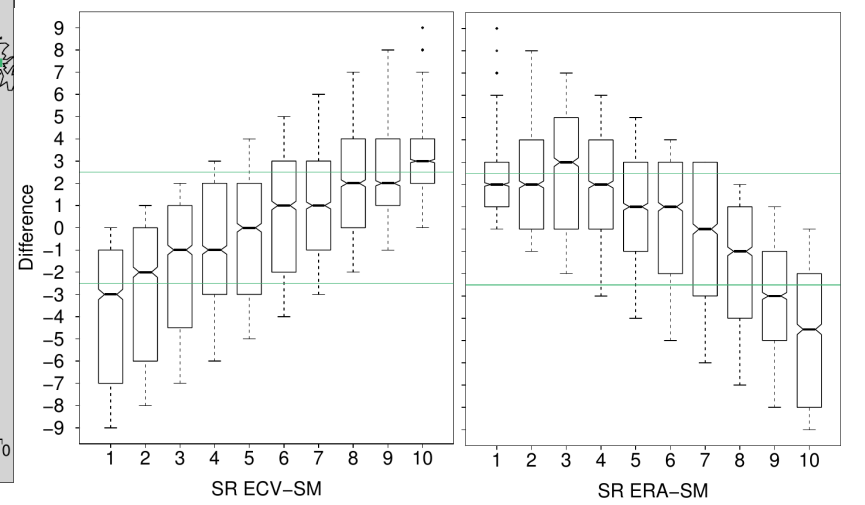
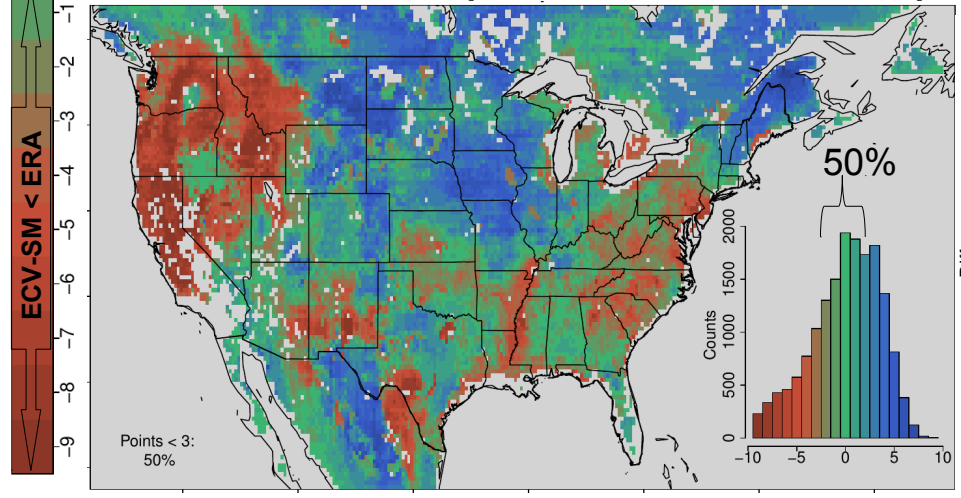




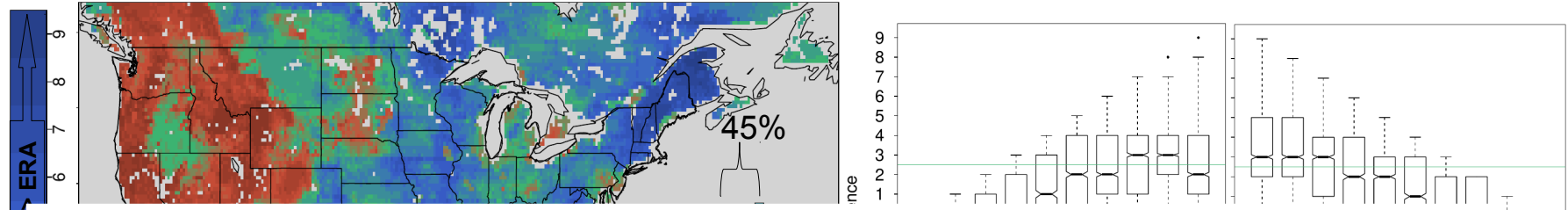
## ECV-SM - ERA (Absolute)



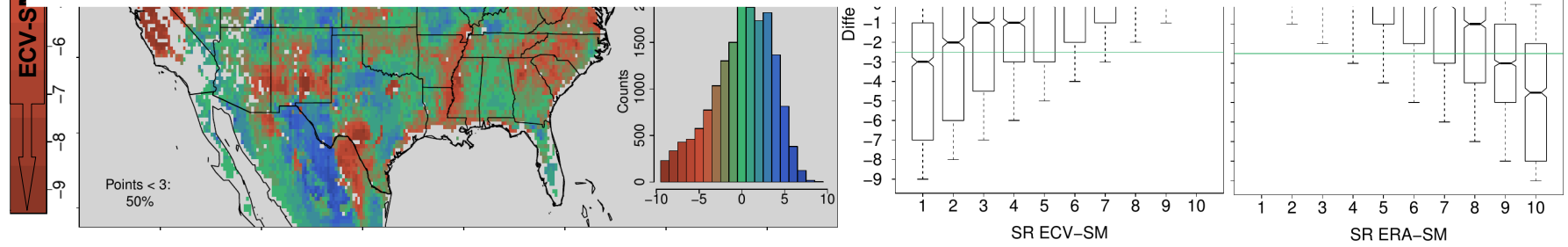
## ECV-SM - ERA (Inter Annual Anom.)



### ECV-SM - ERA (Absolute)

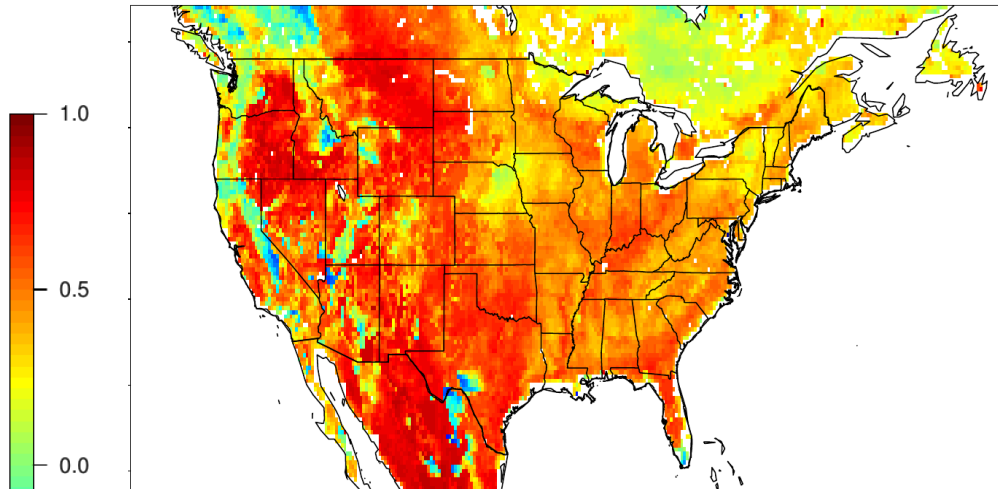


- Approximately 50% of the data is  $\leq 2$  categories apart
- ECV-SM shows small scale features that are not captured by ERA Land
- ERA Land shows large scale features that are not captured by ECV-SM
- Most similarity in the intermediate SR

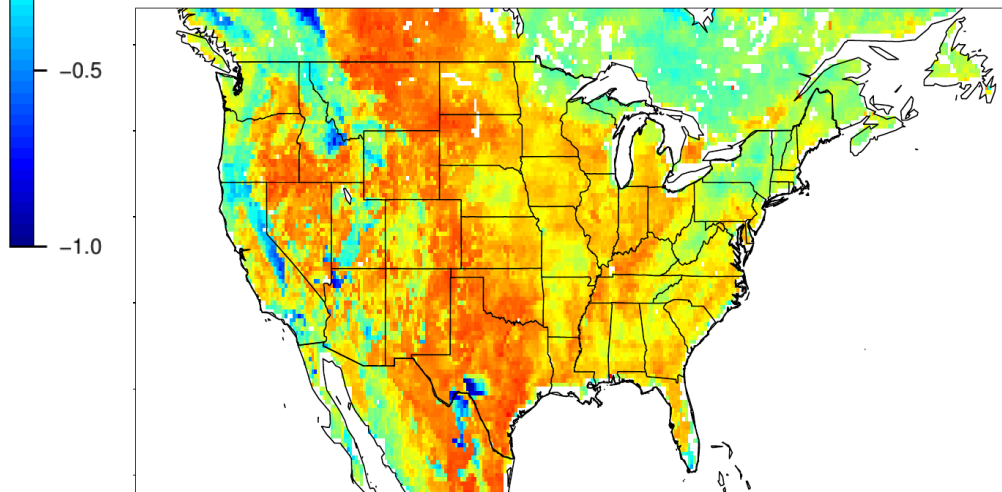




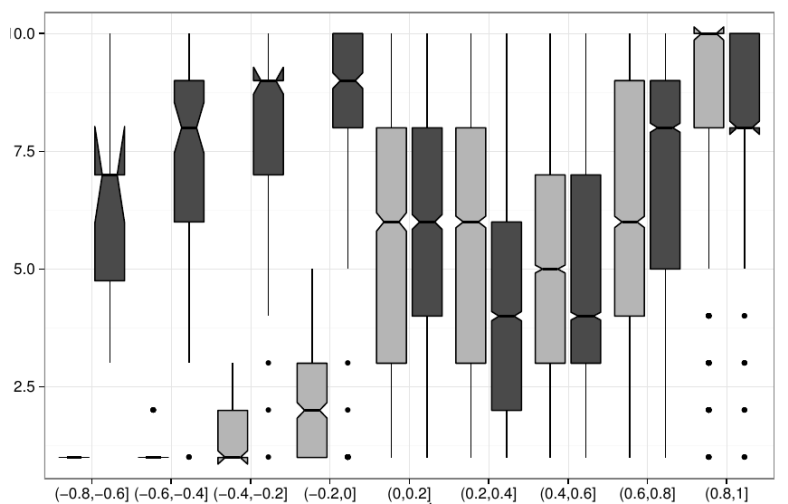
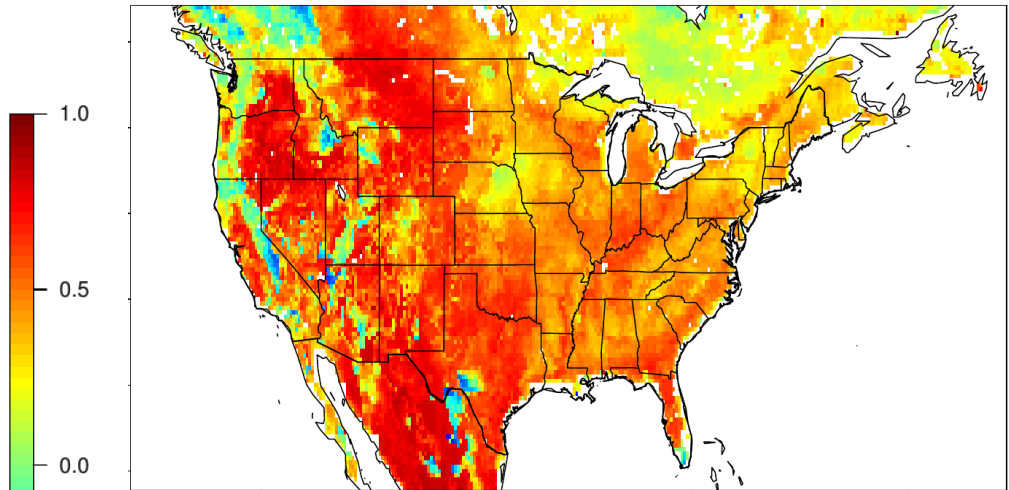
## Absolute



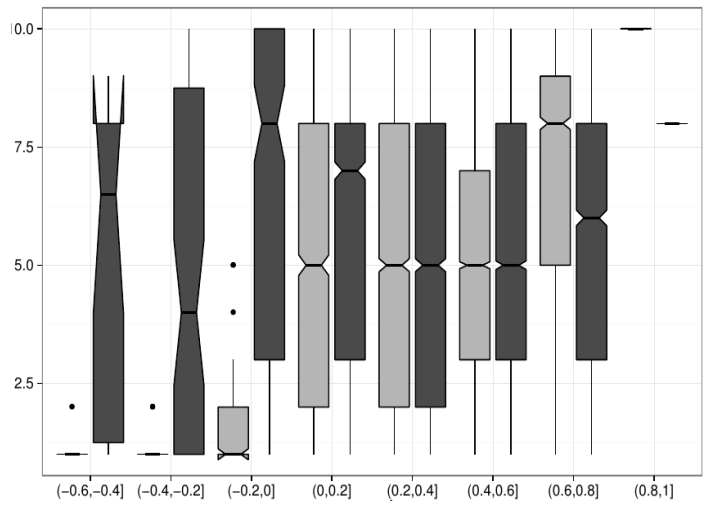
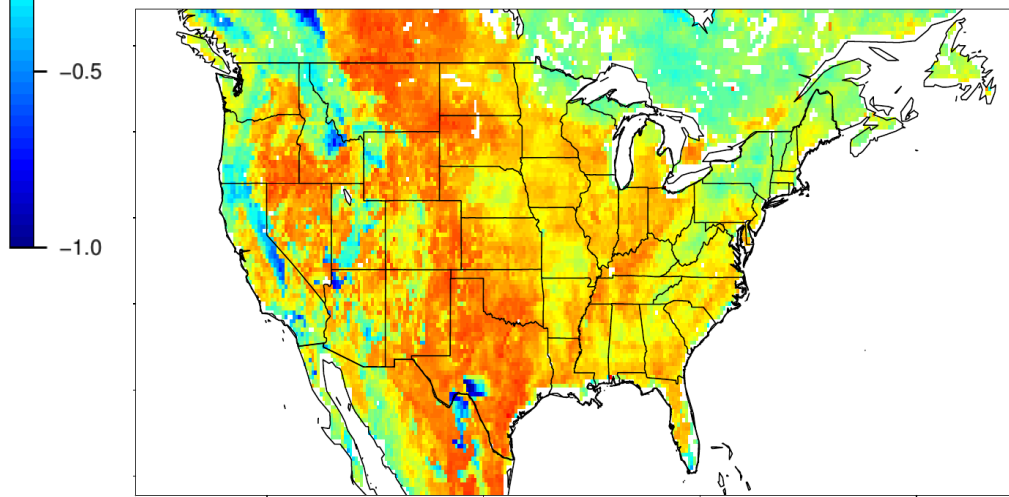
## Inter-annual anomalies



## Absolute

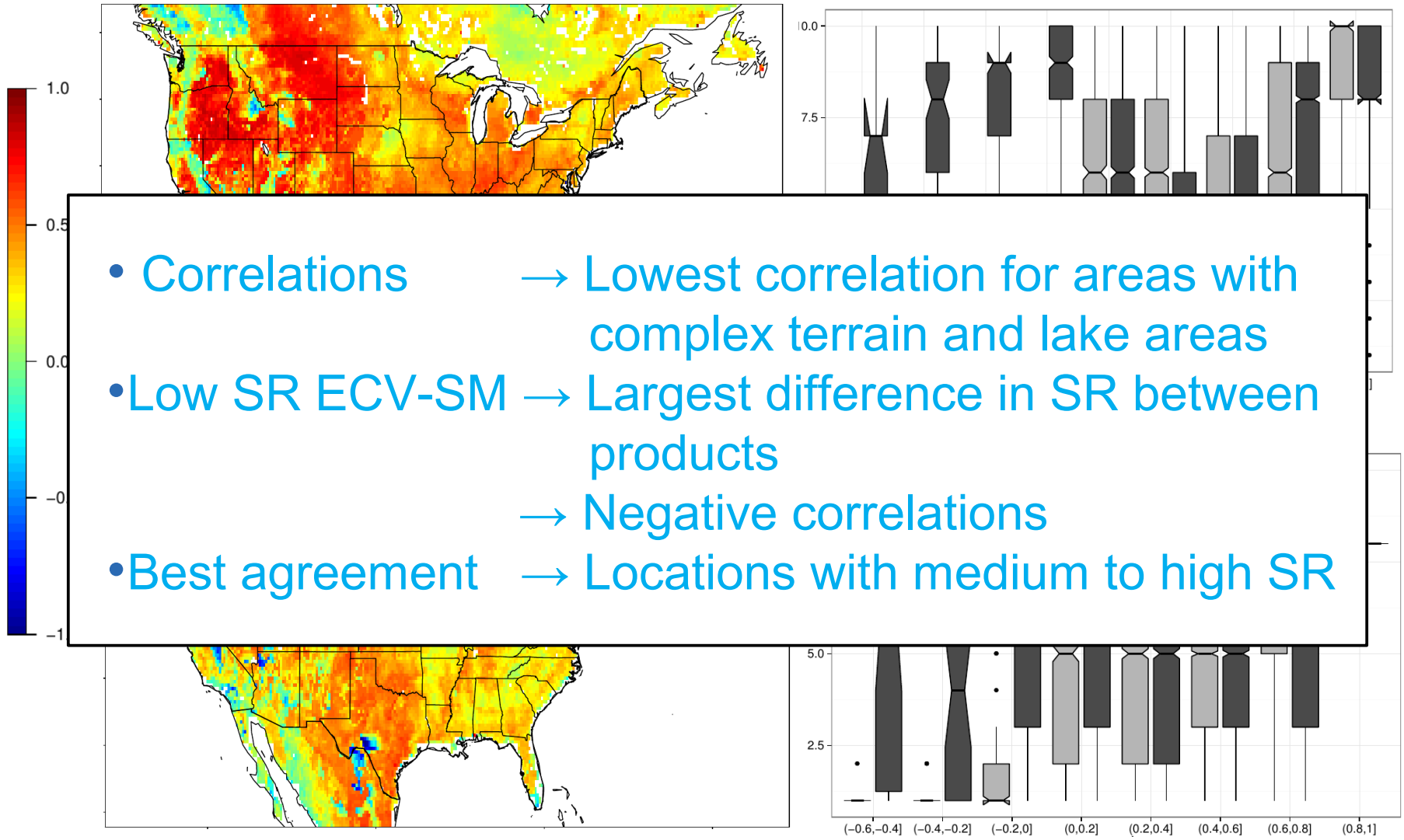


## Inter-annual anomalies



ECV-SM  
 ERA

### Absolute



ECV-SM  
ERA

# Conclusions

## **Large-scale spatial representativeness of soil moisture:**

- **Compares better for absolute soil moisture than for anomalies**
- **Gridded data showed good agreement with reference point scale data**

## **Large-scale spatial representativeness of soil moisture:**

- **Compares better for absolute soil moisture than for anomalies**
- **Gridded data showed good agreement with reference point scale data**

**Thank you for your attention!**



